



# Heliport Lighting Interactive Product Selector



1.800.806.3548 • [www.heliportlighting.com](http://www.heliportlighting.com) • 916.394.2800

800.806.3548  
916.394.2800  
916.394.2809 Fax  
www.flightlight.com



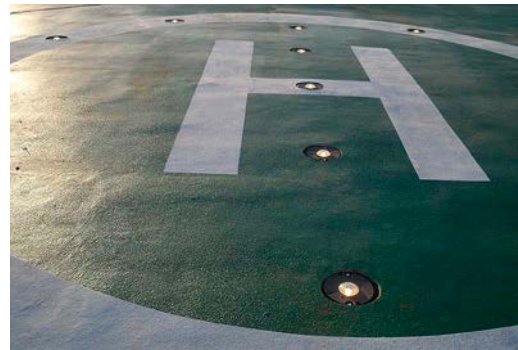
Heliport Lighting  
Interactive  
Product Selector

---

**Please answer the following questions to determine the typical heliport lighting package for your site.**

**Where will the heliport be located?:**

Ground level or roof



Metal helideck



[Adobe Acrobat Reader](#) is required to use the Product Selector.

800.806.3548  
916.394.2800  
916.394.2809 Fax  
www.flightlight.com



Heliport Lighting  
Interactive  
Product Selector

---

**How will the lights be mounted?:**

Elevated



Inset



**Start Over**

800.806.3548  
916.394.2800  
916.394.2809 Fax  
www.flightlight.com



Heliport Lighting  
Interactive  
Product Selector

---

**How will the lights be mounted?:**

Surface



Inset



**Start Over**

800.806.3548  
916.394.2800  
916.394.2809 Fax  
www.flightlight.com



Heliport Lighting  
Interactive  
Product Selector

## What light source do you want?:

Incandescent, 120 VAC



LED, 120 VAC



LED, 12 VDC



LED, Solar



**Start Over**

800.806.3548  
916.394.2800  
916.394.2809 Fax  
www.flightlight.com



Heliport Lighting  
Interactive  
Product Selector

## What light source do you want?:

Halogen, 120 VAC



LED, 120 VAC



LED, 12 VDC



LED, 12 VDC,  
dimming



**Start Over**



800.806.3548  
916.394.2800  
916.394.2809 Fax  
www.flightlight.com



Heliport Lighting  
Interactive  
Product Selector

---

## What light source do you want?:

LED, 120 VAC



LED, 12 VDC



LED, 12 VDC,  
dimming



**Start Over**

800.806.3548  
916.394.2800  
916.394.2809 Fax  
www.flightlight.com



Heliport Lighting  
Interactive  
Product Selector

GET A QUOTE

### Package 1: Elevated, Incandescent

- Easy installation
- Easy maintenance
- Economical: uses off-the-shelf lamps

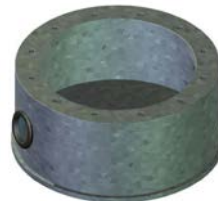
Qty:	Item #:	Description:
8	FL-860-G-69A-141	L860: green, 69W, 14" height, A21 lamp, 1.5" frangible coupling, 120 VAC operation
8	BA-1935AA-25	Base plate for L868AA base: 8.5" diameter, 7.25" bolt circle
8	BA-725-5-2P1	L868AA base: 9" x 5" deep, 1" grm @ 0°, 180° with 2" drain, 7.25" BC
1	WCH-806-1-EX-120-N	Externally lit (halogen), L806 wind cone with orange nylon wind sock (8 ft. long by 18 in. diameter at the mouth), 120 VAC operation



FL-860



Base Plate



Base



Wind Cone

Start Over



800.806.3548  
916.394.2800  
916.394.2809 Fax  
www.flightlight.com



Heliport Lighting  
Interactive  
Product Selector

GET A QUOTE

### Package 2: Elevated, LED

- Easy installation
- Lowered maintenance: LED life expectancy exceeds 50K hours
- Lowered operating costs: low power LED technology

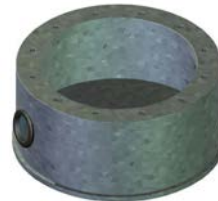
Qty:	Item #:	Description:
8	HL-860-GL-120-141	Elevated LED (5 watt) green perimeter light and 1.5" frangible coupling, 120V operation
8	BA-1935AA-25	Base plate for L868AA base: 8.5" diameter, 7.25" bolt circle
8	BA-725-5-2P1	L868AA base: 9" x 5" deep, 1" grm @ 0°, 180° with 2" drain, 7.25" BC
1	WCH-806-1-EX-120-5	Externally lit (LED), L806 wind cone with orange nylon wind sock (8 ft. long by 18 in. diameter at the mouth) and L810 LED obstruction light, 120 VAC operation



HL-860



Base Plate



Base



Wind Cone

Start Over

800.806.3548  
 916.394.2800  
 916.394.2809 Fax  
 www.flightlight.com



Heliport Lighting  
 Interactive  
 Product Selector

GET A QUOTE

**Package 3: Elevated, LED, Low Voltage**

- Improved safety: low voltage DC operation
- Easy installation
- Lowered maintenance: LED life expectancy exceeds 50K hours
- Lowered operating costs: low power LED technology

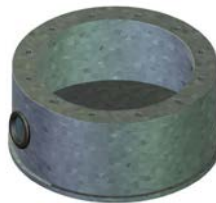
Qty:	Item #:	Description:
8	HL-860-GL-12-141	Elevated LED (5 watt) green perimeter light and 1.5" frangible coupling, 12 VDC operation
8	BA-1935AA-25	Base plate for L868AA base: 8.5" diameter, 7.25" bolt circle
8	BA-725-5-2P1	L868AA base: 9" x 5" deep, 1" grm @ 0°, 180° with 2" drain, 7.25" BC
1	HL-HSC-AC1-DC	Low Voltage System Controller with 12 VDC output, on/off switch, 150 watt power output capability (See Controller data sheet for ordering options: Solar, Radio, etc.)
1	WCH-806-1-EX-12-5	Externally lit (low voltage LED), L806 wind cone with orange nylon wind sock (8 ft. long by 18 in. diameter at the mouth) and L810 LED obstruction light, 12 VDC operation



HL-860



Base Plate



Base



Controller



Wind Cone

**Start Over**

800.806.3548  
 916.394.2800  
 916.394.2809 Fax  
 www.flightlight.com



Heliport Lighting  
 Interactive  
 Product Selector

GET A QUOTE

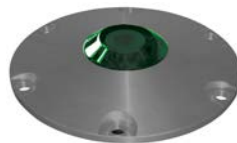
**Package 4: Inset, Halogen, 8" Diameter**

- Knockdown proof: low profile, used in high traffic areas
- Easy installation
- Easy maintenance
- Economical: uses off-the-shelf lamps

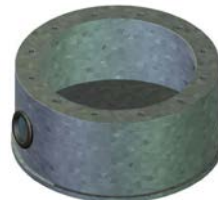
Qty:	Item #:	Description:
8	HL-292-G50 or HL-392-G50	Green omni-directional inset light: anodized aluminum construction, 8" diameter, 7.25" bolt circle, 50W, 120 VAC operation
8	BA-725-5-2	L868AA base: 9" x 5" deep, 1" grm @ 0°, 180° with 2" drain, 7.25" BC
1	WCH-806-1-EX-120-N	Externally lit (halogen), L806 wind cone with orange nylon wind sock (8 ft. long by 18 in. diameter at the mouth), 120 VAC operation



HL-292



HL-392



Base



Wind Cone

**Start Over**

800.806.3548  
 916.394.2800  
 916.394.2809 Fax  
 www.flightlight.com



Heliport Lighting  
 Interactive  
 Product Selector

GET A QUOTE

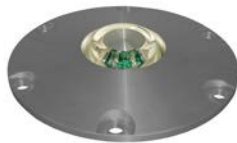
**Package 5: Inset, LED, 8" Diameter**

- Knockdown proof: low profile, used in high traffic areas
- Easy installation
- Low maintenance: LED life expectancy exceeds 50K hours
- Low operating costs: low power LED technology

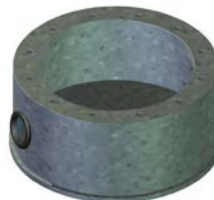
Qty:	Item #:	Description:
8	HL-292-GLP or HL-392-GLP	Green omni-directional LED (8 watt) inset light: anodized aluminum construction, 8" diameter, 7.25" bolt circle, 120V/240V operation
8	BA-725-5-2	L868AA base: 9" x 5" deep, 1" grm @ 0°, 180° with 2" drain, 7.25" BC
1	WCH-806-1-EX-120-5	Externally lit (LED), L806 wind cone with orange nylon wind sock (8 ft. long by 18 in. diameter at the mouth) and L810 LED obstruction light, 120 VAC operation



HL-292



HL-392



Base



Wind Cone

**Start Over**



GET A QUOTE

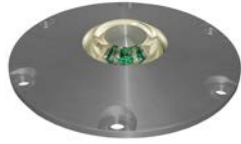
**Package 6: Inset, LED, Low Voltage, 8" Diam.**

- Safety: low voltage DC operation
- Knockdown proof: low profile, used in high traffic areas
- Easy installation
- Low maintenance: LED life expectancy exceeds 50K hours
- Low operating costs: low power LED technology

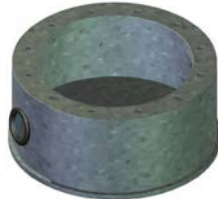
Qty:	Item #:	Description:
8	HL-292-GLV or HL-392-GLV	Green omni-directional LED (8 watt) inset light: anodized aluminum construction, 8" diameter, 7.25" bolt circle, 12 VDC operation
8	BA-725-5-2	L868AA base: 9" x 5" deep, 1" grm @ 0°, 180° with 2" drain, 7.25" BC
1	HL-HSC-AC1-DC	Low Voltage System Controller with 12 VDC output, on/off switch, 150 watt power output capability (See Controller data sheet for ordering options: Solar, Radio, etc.)
1	WCH-806-1-EX-12-5	Externally lit (low voltage LED), L806 wind cone with orange nylon wind sock (8 ft. long by 18 in. diameter at the mouth) and L810 LED obstruction light, 12 VDC operation



HL-292



HL-392



Base



Controller



Wind Cone

**Package 8: Inset, LED, Low Voltage, 6" Diam.\***

- Safety: low voltage DC operation
- 6" recessed, semi-flush mounted fixture
- Knockdown proof: low profile, used in high traffic areas
- Easy installation
- Low maintenance: LED life expectancy exceeds 50K hours
- Low operating costs: low power LED technology

Qty:	Item #:	Description:
8	HL-492-GLV	Green omni-directional LED (8 watt) inset light: anodized aluminum construction, 6" diameter, 5.25" bolt circle, 12 VDC operation
8	BA-525-6	Base: 6.5" x 6" deep, 1" grm @ 0°, 180°, 5.25" BC
1	HL-HSC-AC1-DC	Low Voltage System Controller with 12 VDC output, on/off switch, 150 watt power output capability (See Controller data sheet for ordering options: Solar, Radio, etc.)
1	WCH-806-1-EX-12-5	Externally lit (low voltage LED), L806 wind cone with orange nylon wind sock (8 ft. long by 18 in. diameter at the mouth) and L810 LED obstruction light, 12 VDC operation

\*The HL-492 is also available in 120 VAC LED and Low Voltage Dimming LED packages.



HL-492



Base



Controller



Wind Cone

Start Over

800.806.3548  
 916.394.2800  
 916.394.2809 Fax  
 www.flightlight.com



Heliport Lighting  
 Interactive  
 Product Selector

GET A QUOTE

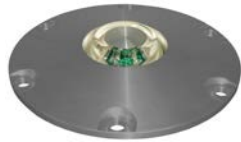
**Package 7: Inset, LED, Low Voltage, Dimming, 8" Diam.**

- Safety: low voltage DC operation
- Knockdown proof: low profile, used in high traffic areas
- Dim lights at night to reduce glare - select from three brightness levels
- Low maintenance: LED life expectancy exceeds 50K hours
- Low operating costs: low power LED technology

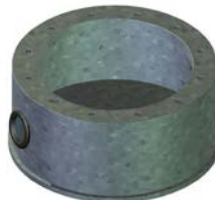
Qty:	Item #:	Description:
8	HL-292-GLVD or HL-392-GLVD	Green omni-directional dimming LED (8 watt) inset light: anodized aluminum construction, 8" diameter, 7.25" bolt circle, 12 VDC operation
8	BA-725-5-2	L868AA base: 9" x 5" deep, 1" grm @ 0°, 180° with 2" drain, 7.25" BC
1	HL-HSC-AC1-DC-D	Low Voltage Dimming System Controller with 12 VDC output, on/off switch, dimming option, 150 watt power output capability (See Controller data sheet for ordering options: Solar, Radio, etc.)
1	WCH-806-1-EX-12-5	Externally lit (low voltage LED), L806 wind cone with orange nylon wind sock (8 ft. long by 18 in. diameter at the mouth) and L810 LED obstruction light, 12 VDC operation



HL-292



HL-392



Base



Controller



Wind Cone

**Start Over**

800.806.3548  
916.394.2800  
916.394.2809 Fax  
www.flightlight.com



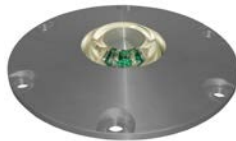
Heliport Lighting  
Interactive  
Product Selector

GET A QUOTE

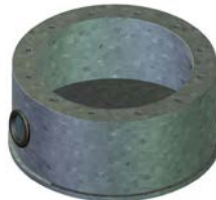
### Package 5: Inset, LED, 8" Diameter

- Knockdown proof: low profile, used in high traffic areas
- Easy installation
- Low maintenance: LED life expectancy exceeds 50K hours
- Low operating costs: low power LED technology

Qty:	Item #:	Description:
8	HL-392-GLP	Green omni-directional LED (8 watt) inset light: anodized aluminum construction, 8" diameter, 7.25" bolt circle, 120V/240V operation
8	BA-725-5-2	L868AA base: 9" x 5" deep, 1" grm @ 0°, 180° with 2" drain, 7.25" BC
1	WCH-806-1-EX-120-5	Externally lit (LED), L806 wind cone with orange nylon wind sock (8 ft. long by 18 in. diameter at the mouth) and L810 LED obstruction light, 120 VAC operation



HL-392



Base



Wind Cone

Start Over



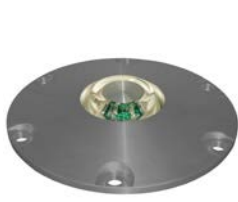


GET A QUOTE

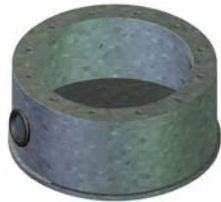
**Package 6: Inset, LED, Low Voltage, 8" Diam.**

- Safety: low voltage DC operation
- Knockdown proof: low profile, used in high traffic areas
- Easy installation
- Low maintenance: LED life expectancy exceeds 50K hours
- Low operating costs: low power LED technology

Qty:	Item #:	Description:
8	HL-392-GLV	Green omni-directional LED (8 watt) inset light: anodized aluminum construction, 8" diameter, 7.25" bolt circle, 12 VDC operation
8	BA-725-5-2	L868AA base: 9" x 5" deep, 1" grm @ 0°, 180° with 2" drain, 7.25" BC
1	HL-HSC-AC1-DC	Low Voltage System Controller with 12 VDC output, on/off switch, 150 watt power output capability (See Controller data sheet for ordering options: Solar, Radio, etc.)
1	WCH-806-1-EX-12-5	Externally lit (low voltage LED), L806 wind cone with orange nylon wind sock (8 ft. long by 18 in. diameter at the mouth) and L810 LED obstruction light, 12 VDC operation



HL-392



Base



Controller



Wind Cone

**Package 8: Inset, LED, Low Voltage, 6" Diam.\***

- Safety: low voltage DC operation
- 6" recessed, semi-flush mounted fixture
- Knockdown proof: low profile, used in high traffic areas
- Easy installation
- Low maintenance: LED life expectancy exceeds 50K hours
- Low operating costs: low power LED technology

Qty:	Item #:	Description:
8	HL-492-GLV	Green omni-directional LED (8 watt) inset light: anodized aluminum construction, 6" diameter, 5.25" bolt circle, 12 VDC operation
8	BA-525-6	Base: 6.5" x 6" deep, 1" grm @ 0°, 180°, 5.25" BC
1	HL-HSC-AC1-DC	Low Voltage System Controller with 12 VDC output, on/off switch, 150 watt power output capability (See Controller data sheet for ordering options: Solar, Radio, etc.)
1	WCH-806-1-EX-12-5	Externally lit (low voltage LED), L806 wind cone with orange nylon wind sock (8 ft. long by 18 in. diameter at the mouth) and L810 LED obstruction light, 12 VDC operation

\*The HL-492 is also available in 120 VAC LED and Low Voltage Dimming LED packages.



HL-492



Base



Controller



Wind Cone

Start Over

800.806.3548  
 916.394.2800  
 916.394.2809 Fax  
 www.flightlight.com



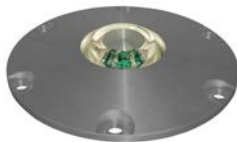
Heliport Lighting  
 Interactive  
 Product Selector

GET A QUOTE

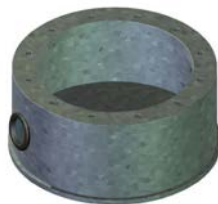
**Package 7: Inset, LED, Low Voltage, Dimming, 8" Diam.**

- Safety: low voltage DC operation
- Knockdown proof: low profile, used in high traffic areas
- Dim lights at night to reduce glare - select from three brightness levels
- Low maintenance: LED life expectancy exceeds 50K hours
- Low operating costs: low power LED technology

Qty:	Item #:	Description:
8	HL-392-GLVD	Green omni-directional dimming LED (8 watt) inset light: anodized aluminum construction, 8" diameter, 7.25" bolt circle, 12 VDC operation
8	BA-725-5-2	L868AA base: 9" x 5" deep, 1" grm @ 0°, 180° with 2" drain, 7.25" BC
1	HL-HSC-AC1-DC-D	Low Voltage Dimming System Controller with 12 VDC output, on/off switch, dimming option, 150 watt power output capability (See Controller data sheet for ordering options: Solar, Radio, etc.)
1	WCH-806-1-EX-12-5	Externally lit (low voltage LED), L806 wind cone with orange nylon wind sock (8 ft. long by 18 in. diameter at the mouth) and L810 LED obstruction light, 12 VDC operation



HL-392



Base



Controller



Wind Cone

**Start Over**

800.806.3548  
916.394.2800  
916.394.2809 Fax  
www.flightlight.com



Heliport Lighting  
Interactive  
Product Selector

GET A QUOTE

**Package 9: Elevated, Solar**

- Solar powered, no AC power required.
- For fast, permanent and temporary installations.

**Qty: Item #:**

**Description:**

Qty	Item #	Description
8	AV70-G or OL4-G	Green, omni-directional, LED, solar elevated light
1	WCH-806-1-EX-12-5 Solar Power Supply	Externally lit (low voltage LED), L806 wind cone with orange nylon wind sock (8 ft. long by 18 in. diameter at the mouth) and L810 LED obstruction light, 12 VDC operation with Solar Power Supply



AV70



OL4



Wind Cone

**Start Over**

800.806.3548  
 916.394.2800  
 916.394.2809 Fax  
 www.flightlight.com



Heliport Lighting  
 Interactive  
 Product Selector

GET A QUOTE

**Package 11: Surface Mount, LED, Stainless Steel**

- Low-profile.
- Easy maintenance.
- Easy installation.
- Corrosive resistant stainless steel construction.

Qty:	Item #:	Description:
8	HL-590L-G	Green omni-directional LED (8 watt) surface mount light: stainless steel construction, 4.175" height, 120V/240V operation
1	WCH-806-1-EX-120-5	Externally lit (LED), L-806 wind cone with orange nylon wind sock (8 ft. long by 18 in. diameter at the mouth) and L-810 LED obstruction light, 120 VAC operation.



HL-590L



Wind Cone

**Package 12: Surface Mount, LED, Machined Aluminum**

- Low-profile.
- Easy maintenance.
- Easy installation.
- Sturdy aluminum construction.

Qty:	Item #:	Description:
8	HL-592L-G	Green omni-directional LED (8 watt) surface mount light: machined aluminum construction, 4.175" height, 120V/240V operation
1	WCH-806-1-EX-120-5	Externally lit (LED), L-806 wind cone with orange nylon wind sock (8 ft. long by 18 in. diameter at the mouth) and L-810 LED obstruction light, 120 VAC operation.



HL-592L



Wind Cone

**Start Over**