



Flight Light Inc.
2708 47th Ave.
Sacramento, California, U.S.A.
95822-3806

PH (916) 394-2800 FX (916) 394-2809
TF (800) 806-3548 EM sales@flightlight.com

HL-292 **LED or Halogen** **Heliport Perimeter** **Inset Light**

Compliances

- FAA AC 150/5390-2C Heliport Design Guide
- Exceeds FAA Engineering Brief 87 Specifications
- ICAO Annex 14, Volume II
- UL 1598 Standard (only "LPUL" lamp is UL listed)
- Transport Canada TP14371, AGA 7.16
- IP67 Compliant

Applications

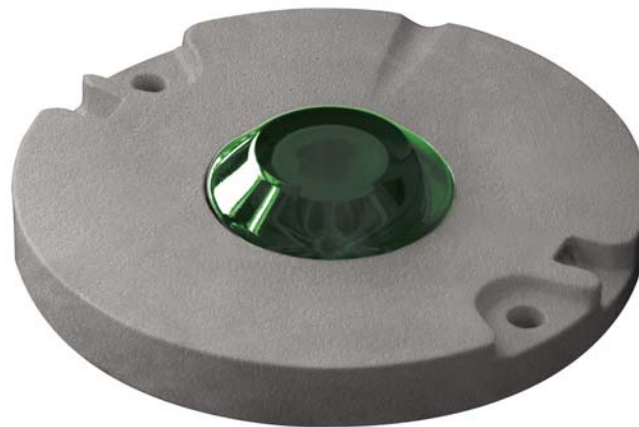
Used to replace elevated helipad perimeter lights at locations where the lights are frequently knocked down by aircraft or maintenance vehicles.

Why Our HL-292 is Better

- Lightweight and robust aluminum alloy construction.
- HL-292 has been tested to 1,000 PSI (pounds per square inch) and conforms with both FAA and IEC requirements.
- Pressure test plug ensures moisture-proof light cavity.
- Prism removal and replacement achieved without need for adhesives or sealants.
- Pre-focused optics simplify maintenance.
- Corrosion resistant anodized finish.
- Available in 10-30VDC, 120-240VAC or 277VAC versions.
- Direct retrofit, drop in replacement. Factory retrofits available for your existing halogen fixtures.
- Independent intensity testing has provided results which exceed FAA Engineering Brief 87 specifications.
- Available for non-airport applications such as heliport and architectural lighting with LED or 50W, 120V or 240V lamps.

Specifications

- Low profile: .39" (10mm).
- Light channel within .2" (5mm) of grade.
- Corrosion resistant finish meets U.S. Military Standard Salt Fog Test (MIL-STD-810E, Method 509.3) and IEC EN 60068-2-11 (Test Kb, severity 3).
- Color beam variations achieved by dichroic coating.



- Includes 48" [122 cm] of UL SO Cable 16AWG (UL Version).
- 8" style: net weight 6.6 lbs. (3kg), gross weight 7.7 lbs. (3.5kg). Carton size: .23 cu. ft. (.007 cu. meters); 9" (d) x 9" (w) x 5" (h) (229mm (w) x 229mm (d) x 127mm (h))
- Temperature range: -4°F/+131°F (-20°C/+55°C).

LED Version

- Cost-saving, energy-efficient LEDs.
- Power Consumption: AC input = 7.2VA; DC input = 4W; IR AC input = 10.8VA; IR DC input = 7.2W
- Low maintenance - LED light source has 50,000 hour lifetime (50X longer than halogen).
- Monochromatic output of LEDs is more conspicuous than halogen.
- Pilots prefer LED over halogen because of increased visibility.
- With our Dimming Controller option, the lights can be dimmed at night to reduce glare - select from three brightness levels.
- LED can be used with 120V/240V, 50Hz/60Hz power.
- Power adapter included.



Visible/Infrared LED Option

- Night Vision Goggle (NVG) compatible.
- Optical Specifications:
 - Infrared Output:
 - Exceeds SAE Aerospace recommendations for Landing/Taxi Lights.
 - Usable beam width: 55° to 125° vertical, 360° horizontal.
 - Output wavelength: 850nm.
 - Infrared does not dim with the "LVD" dimming option.
 - Visible Output:
 - Exceeds ICAO requirements for green LEDs (see photometric chart).
 - Usable beam width: 30° vertical, 360° horizontal.
 - Output wavelength: 530nm.
- Electrical Specifications:
 - Input voltage range: 120-240VAC (UL listed), 277VAC (not UL listed).
 - Input frequency: 50 or 60Hz.
 - Input current: 40mA AC.
 - Input power to the fixture: 10.8 VA.
 - Fixture is internally grounded for installer safety.

Visit our web site: www.flightlight.com

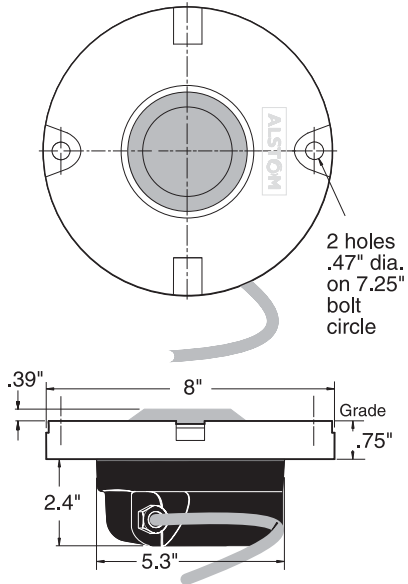


Flight Light Inc.
 2708 47th Ave.
 Sacramento, California, U.S.A.
 95822-3806

PH (916) 394-2800 FX (916) 394-2809
 TF (800) 806-3548 EM sales@flightlight.com

HL-292 LED or Halogen Heliport Perimeter Inset Light

HL-292 OMNI-DIRECTIONAL GENERAL ARRANGEMENT (UL Listed)



Common Replacement Parts (Halogen & LED)

1	Body Casting (Std) – Anodized	
2	Deep Bottom Cover Casting	80-040206
4	Bottom Cover Gasket	27-4061T271
6	Prism Clamp	80-021307
15	Prism Clamp Gasket	80-021309
16	Prism Gasket	65-033090
18	White (Clear) Prism Dome	20-016080
25	Pressure Test Plug	80-021343
ALT	Schrader Tank Valve	80-021327
27	2-Pin Male Connector	TRC-10518-117D002
28	3-Pin Male Connector (DC Dimming only)	80-013031
29	2-Conductor Female Connector	TRC-10519-07-021
30	3-Conductor Female Connector (DC Dimming only)	80-012022

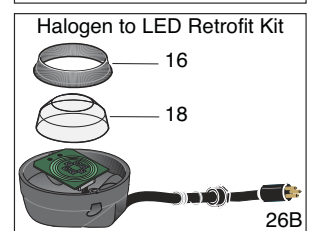
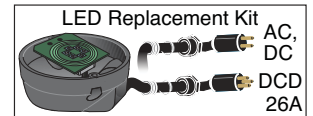
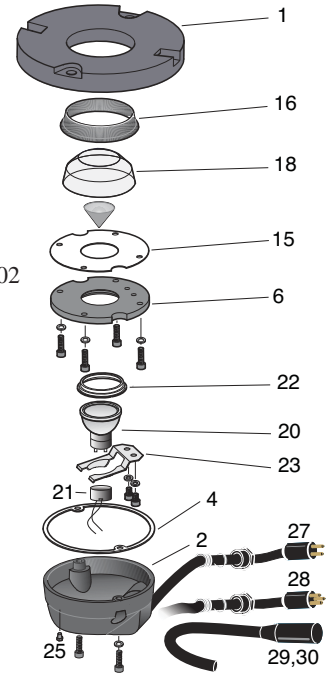
Halogen ONLY Parts:

18	Green Prism Dome	80-019193
ALT	Yellow Prism Dome	80-019191
ALT	Red Prism Dome	80-019182
ALT	Blue Prism Dome	80-019190
20	50W 120V Reflector Lamp	LA-008084
21	120V/240V Lamp Holder	80-015057
22	Lamp Gasket	80-033077
23	Lamp Retaining Spring	80-032039

LED ONLY Parts:

26A	AC LED Replacement Kit	HL-XL8KITB-AC*
ALT	Dimming LED Replacement Kit	HL-XL8KITB-D*
ALT	DC LED Replacement Kit	HL-XL8KITB-DC*
ALT	UL LED Replacement Kit	HL-XL8KITB-UL*
26B	Halogen to LED Retrofit Kit	HL-XLPKITB-292*

* For LED Replacement Kit, X = Color



Ordering Codes

Fixture	Output	Power/Compliance
HL-292 ¹	G: Green (std) ² B: Blue R: Red W: White Y: Yellow IR: Infrared ³	50: 50W, 120V ⁴ 52: 50W, 240V ⁴ LP: 120-240VAC LED ^{4,5} LP3: 277VAC LED ^{4,5} LPUL: 120-240VAC LED ^{5,6} LV: 10-30VDC LED ^{4,5} LVD: Dimming 10-30VDC LED ^{4,5}

HL-292		
--------	--	--

¹ Formerly 'HL-ZA292A'.

² Green is currently the recommended color for heliport perimeter lights.

³ Infrared can be used in conjunction with color LEDs. Infrared does not dim with the "LVD" dimming option.

⁴ Lamp option is not UL listed.

⁵ Color LED with white (clear) prism. Power adapter included.

⁶ Only "LPUL" lamp option can be UL listed. Connector not included. UL labeled fixtures only available for shipment to U.S. and Canada.

Photometric Comparison with ICAO Requirements for TLOF

Vertical Angle (Deg)	Avg. Intensity (Cd)	ICAO Spec (Cd)
2	70.8	15
5	66.5	30
10	48.3	15
13	36.6	8
20	23.9	3

Visit our web site: www.flightlight.com



Flight Light Inc.
 2708 47th Ave.
 Sacramento, California, U.S.A.
 95822-3806

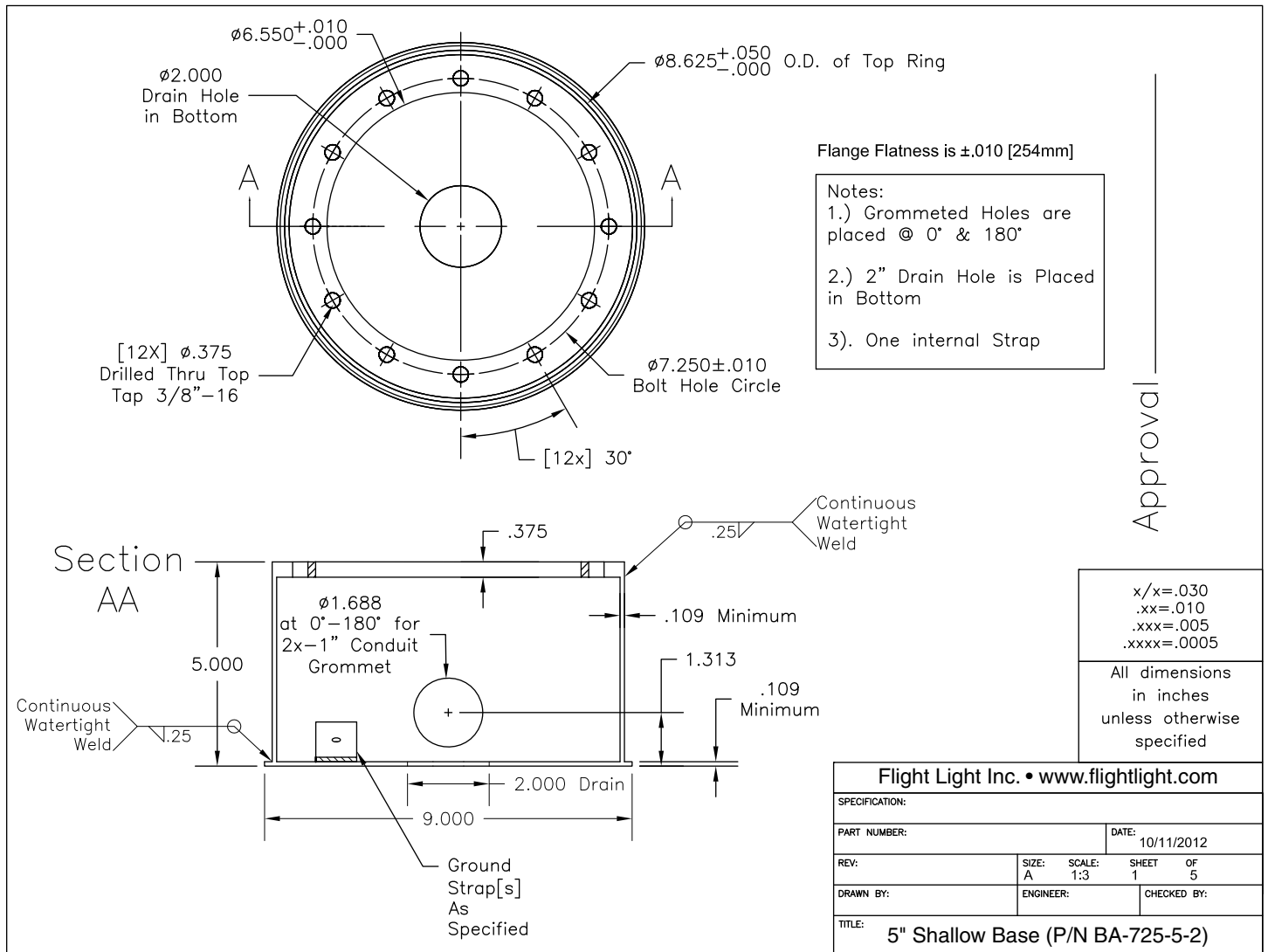
PH (916) 394-2800
TF (800) 806-3548

FX (916) 394-2809
EM sales@flightlight.com

HL-292
LED or Halogen
Heliport Perimeter
Inset Light

5" Shallow Base (P/N BA-725-5-2)

• L-868A FAA Approved



Visit our web site: www.flightlight.com